

A blurred background image of several young children sitting at a wooden table in a classroom, engaged in an activity. One child in the foreground is smiling and looking towards the camera.

City Leadership – Toronto's Early Learning and Child Care System

Impact of Early Learning on Community and Local Economy

Elaine Baxter-Trahair

General Manager, Toronto Children's Services

November 2nd, 2018

2018 Global Business Summit on Early Childhood



Overview

- Why Invest In The Early Years?
- Canada's Policy Landscape
- Toronto's Context
- Service System Management
- Areas of focus:
 - Growth
 - Workforce
 - Quality
 - Child & Family Programs
- Our City's Approach
- Our Outcomes



Investing in the Early Years

- Devoting resources to help people at the very beginning of life – starting prenatally, to infants, through to school-aged children – has a range of long-lasting benefits



- supporting child and family well-being
- growing the economy, and
- greater social equity

- Strategies to improve outcomes include high-quality early education and care programs, family supports, and early detection of emerging problems.

Canada's Policy Landscape

Early Learning and Child Care in Canada



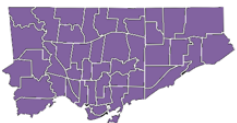
Federal Policy
and Funding



Provincial Policy
Directions and
Investment



Municipal
Planning &
Management



Social Supports in Canada

Universal Healthcare

Canadian
Social
Supports

Public Education
(Including Full Day
Kindergarten)

Income Supports
(Including Parental
Leave)

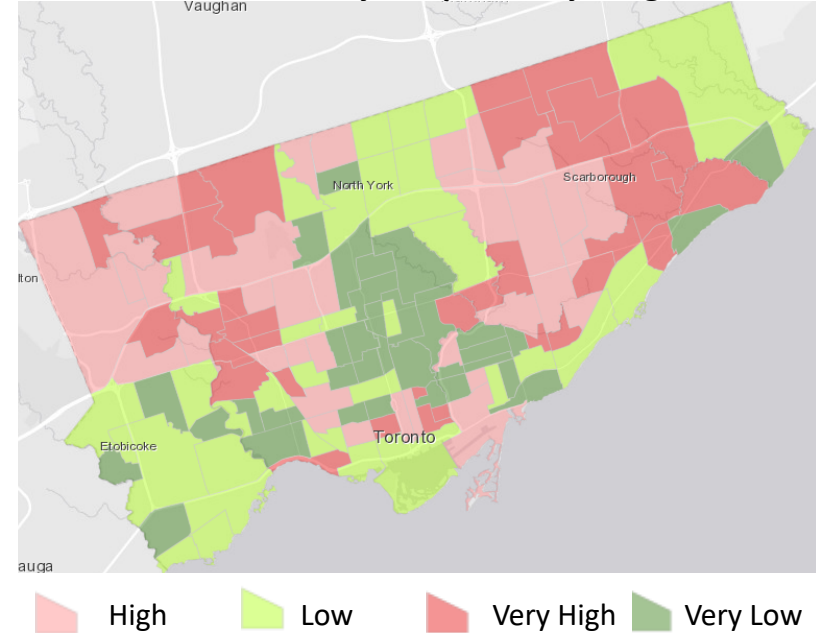
Early Learning and
Family Supports

Toronto

- Canada's largest city: over 2.7 million people.
 - Nearly **400,000 children**
- Most diverse city in the world:
 - Over half of our population (51.5%) belong to a visible minority group
 - Less than half of our population were born in Canada (49.5%) and this is growing.
- Highest child poverty rate in Canada.
 - In Toronto, **over 1 in 4 children** living in poverty



Level of Child & Family Inequities by Neighbourhood



System Size, Scope, and Unmet Needs

The City of Toronto manages **one of the largest** child care systems in Canada

Over **1000** licensed child care centres

More than **76,000** licensed spaces

Over **270** Child & Family program locations and growing

69% of centres accept a child care fee subsidy

345,915 children (0-12 yrs.)

92,200 children living in low income

30,490 fee subsidies

13,039 waitlist

Areas of Strategic Focus



Growing Child Care to Meet Needs



Investing in a Thriving Workforce



High Quality Programs and Services



Integrated Child and Family Programs

Demand for Child Care Depends on Cost

By the year 2026...



Licensed spaces for 50% of 0-4 year olds

- Approximately 30,000 new spaces



More **affordable** child care

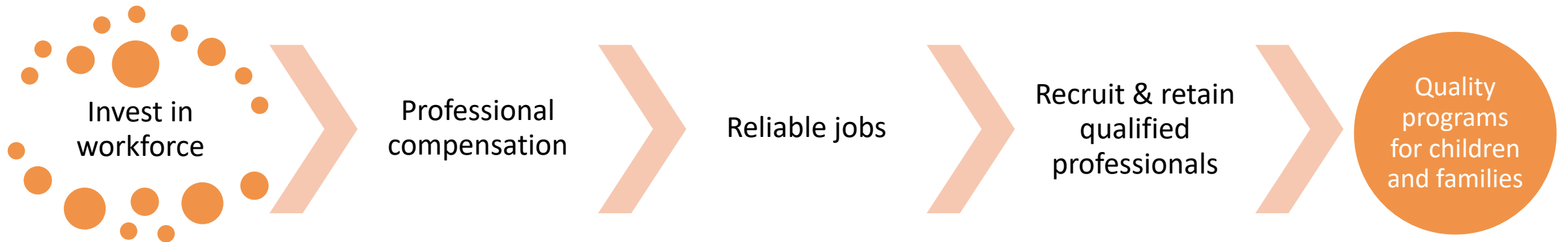
- 40-50% of spaces subsidized
- Parent fees 25-40% lower



Increase **wages** for child care workers

Supporting a Thriving Workforce

- Educators are essential to quality programs for children

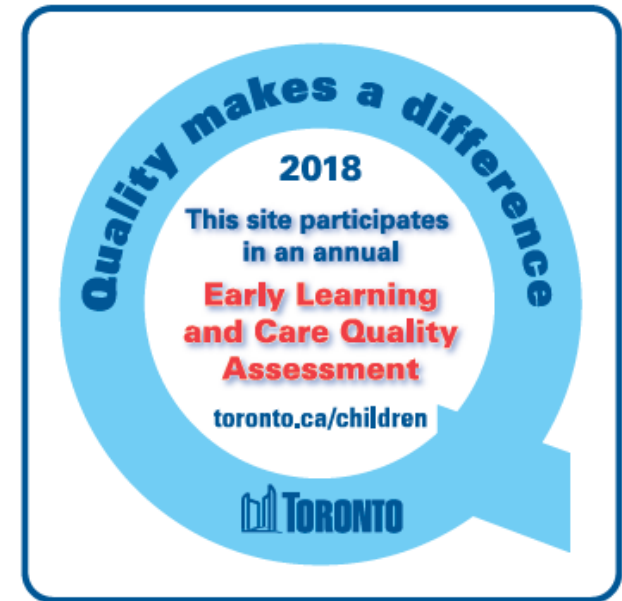


Quality: Standardization and Capacity Building

Quality		
Assess	Improve	Promote



- Assessment for Quality Improvement (AQI) is the only validated Canadian tool for measuring quality of child care programs.
- The City of Toronto also provides ongoing capacity building support by working with child care service providers to ensure continuous quality improvement.

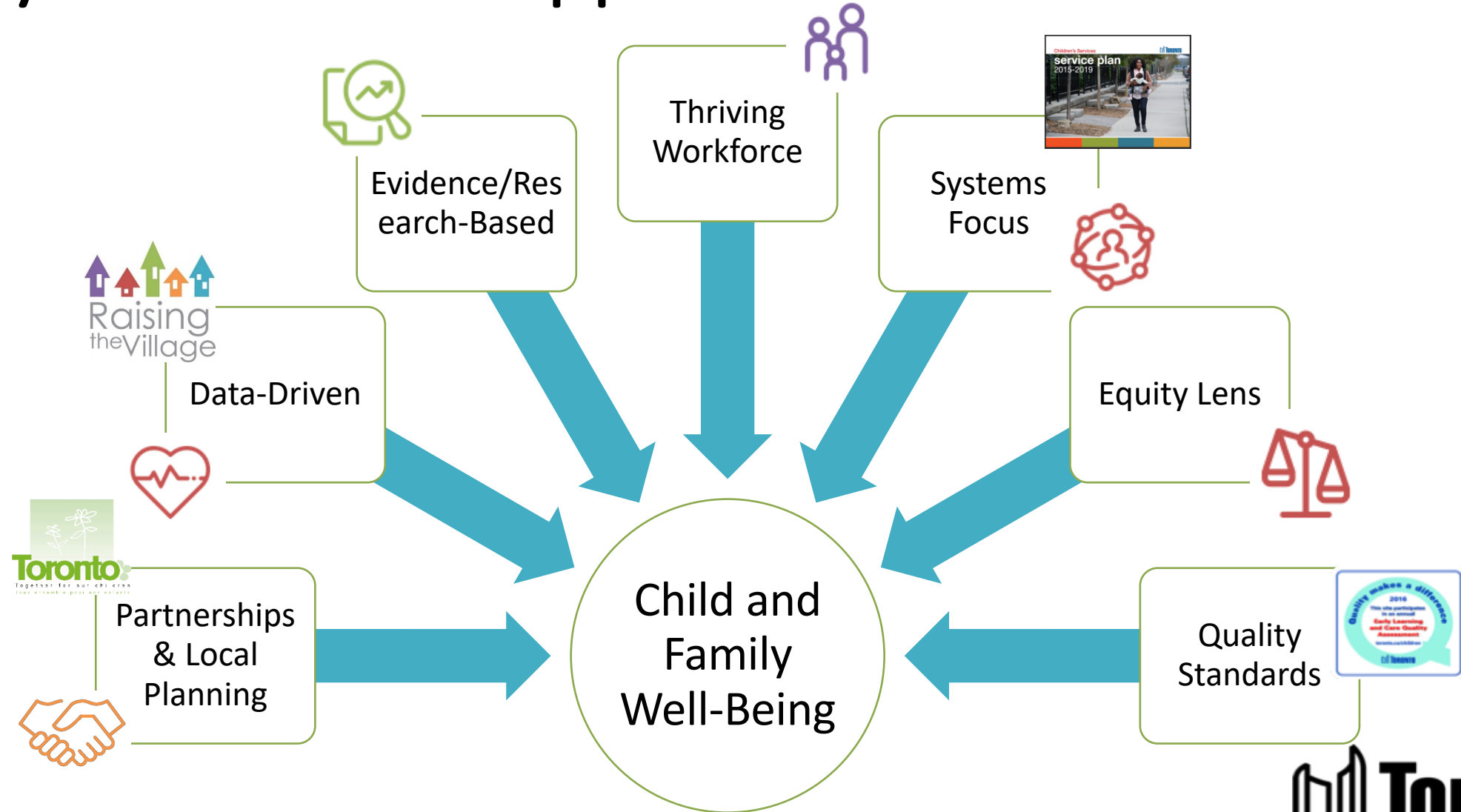


Child and Family Centres: Integration

- EarlyON programs exist across Ontario:
 - free,
 - community based,
 - drop-in programs
- An integrated system to meet the diverse needs of families – strategically aligned with:
 - Health supports
 - Community resources
 - Early identification of developmental support needs



City of Toronto's Approach



Child Outcomes

-  Physical Health & Development
-  Mental Health & Social Development
-  Learning & Education
-  Rights & Opportunities
-  Nurture and Care

Family Outcomes

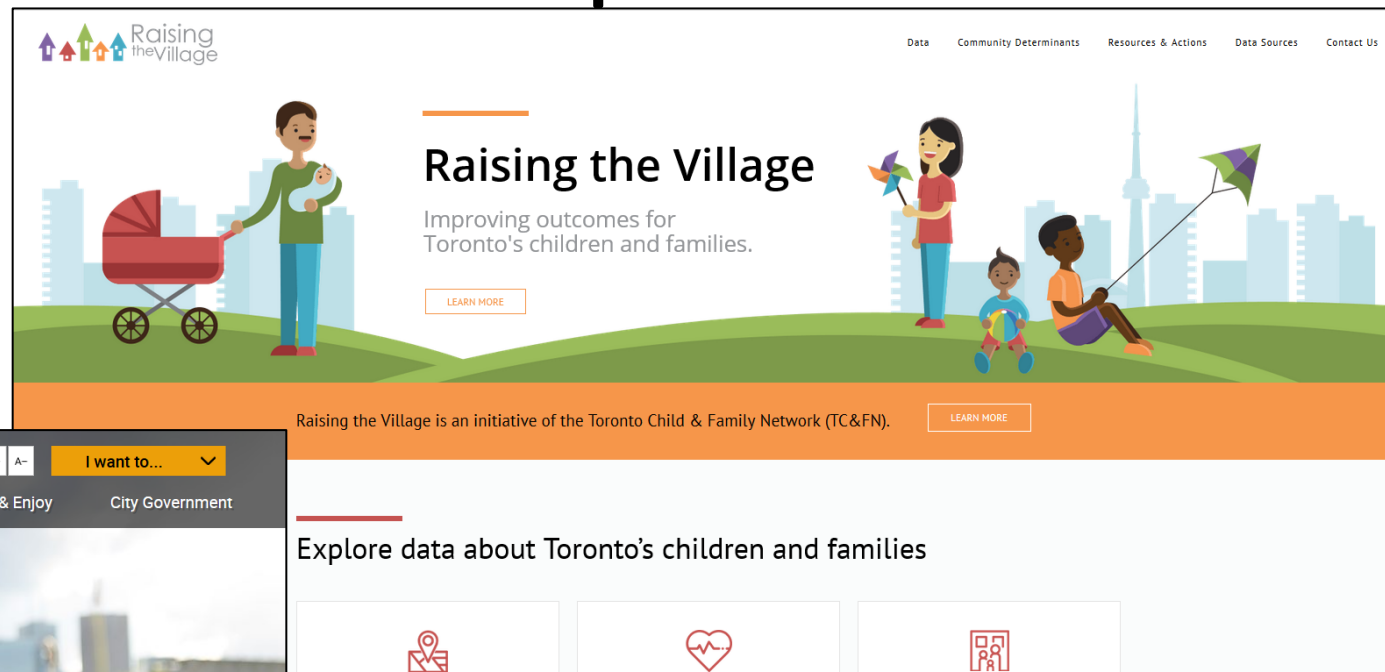
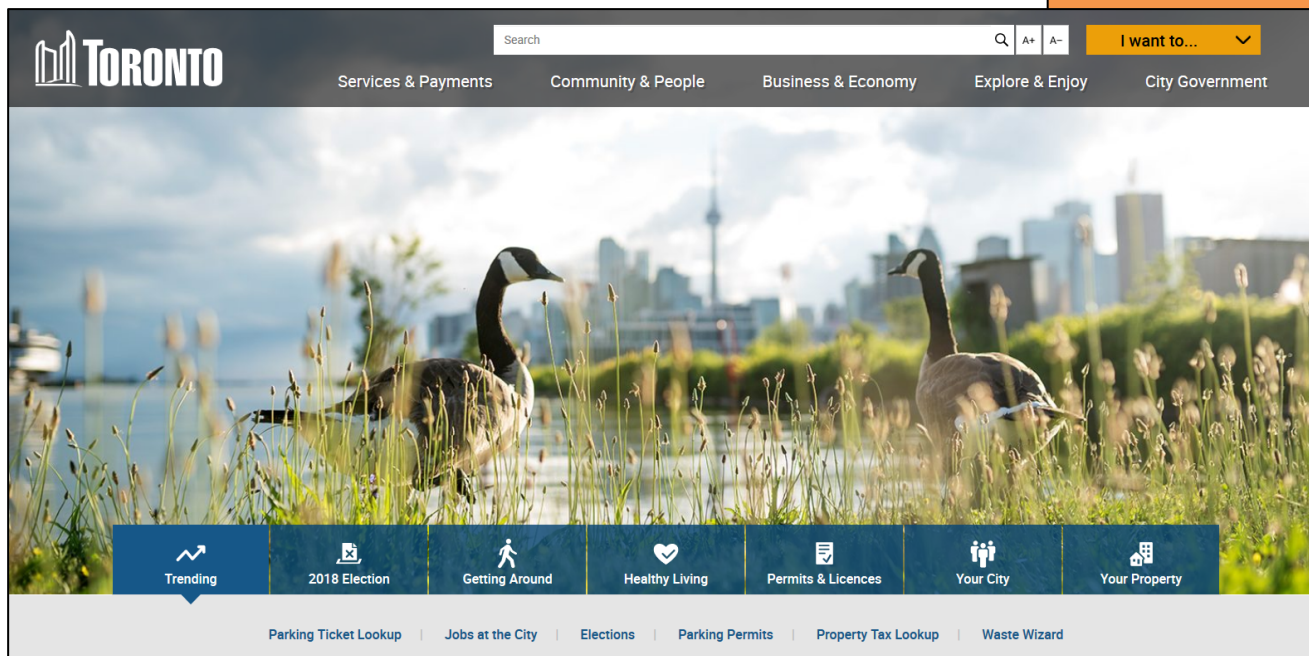
-  Family Health
-  Resilience & Support
-  Lifelong Learning
-  Financial Security
-  Community & Culture

raisingthevillage.ca



Thank you! Visit us Online for More Information and Interactive Maps

<https://www.toronto.ca/>



<https://raisingthevillage.ca/>

